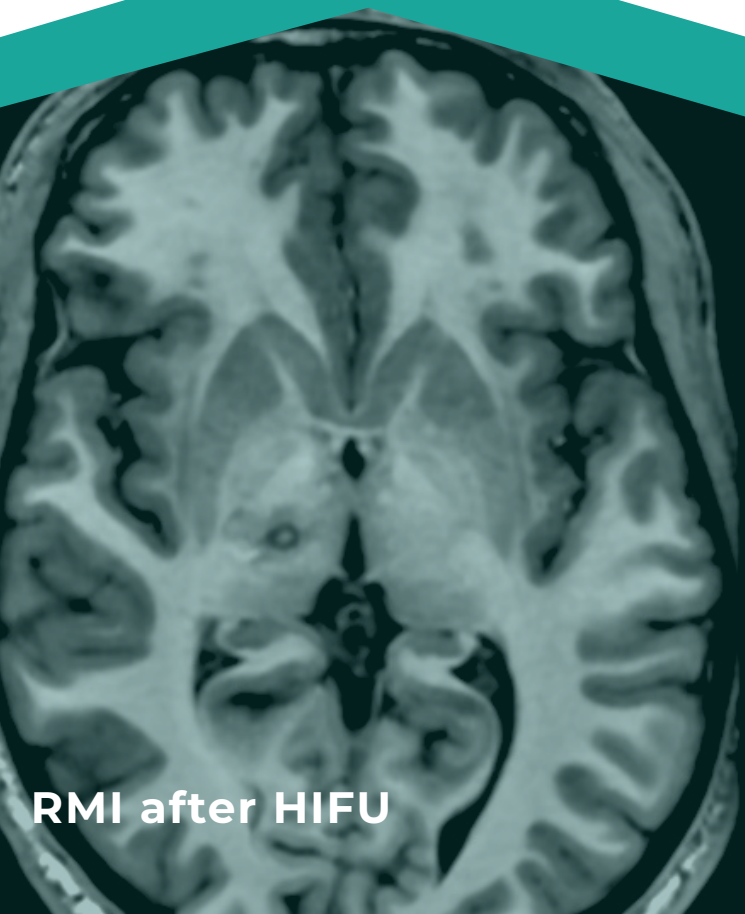


## MULTIDISCIPLINARY UNIT

Follow the patient from the first appointment, throughout and after the treatment.

- Neurology (focusing on Diseases of the Movement)
- Neurosurgery
- Radiology
- Anesthesiology



RMI after HIFU




### Single Unit in Portugal

To refer a potential candidate or for medical advise

contact us:

 [geral@hopcasaude.pt](mailto:geral@hopcasaude.pt)

 [hifu.pt](http://hifu.pt)

 Rua da Bolsa 80  
4050-116 Porto



Hopca Saúde



### ESSENTIAL TREMOR AND PARKINSON

Focused Ultrasound Treatment



# HIFU MRg

Non-surgical treatment of Essential Tremor (ET) and symptoms of Parkinson's Disease.



Without surgical incisions, ionizing radiation and anesthesia.



After discharge, the patient can resume usual activities within a few days.

**BEFORE**



**AFTER**

# HIFU MRg treatment process



Clinical evaluation by a neurologist.



Examination phase: clinical analyses, ECG, brain CT to measure skull bone density, and brain MRI.



Treatment: ultrasound waves pass through the skull and reach the intended brain target.



The patient is discharged after a post-HIFU brain control MRI.



**Marked reduction  
or disappearance  
of tremor in a  
single session**